



Inside the Hive

A Home for Bees



Honeybees live in the nests or hives where they store their honey. Each hive has a large group of 30,000 to 60,000 bees that make up the colony. Honeybees will naturally build their hives inside the hollows of trees or in other sheltered places. Beekeepers create wooden hives for honeybees to live in.

Though there are several different type of hives, the most popular type of hive used by beekeepers is called the Langstroth hive. Inside the hives are combs, made out of wax that is produced by the worker bees. The bees use their mouths to shape the wax into a hexagon wax structures called cells. There are thousands of cells that make up each comb. The cells are used for storing honey, pollen, and as nurseries for developing bees.

Working Together as a Family

It takes teamwork to make honey! There are several different types of bees inside a colony and each has a special job.

Queen Bee	Drones	Worker Bees
Only one queen	The only male bees (approx. 3k)	All female bees & majority of bees in the hive (approx. 60k)
The largest bee in the colony	Have big eyes and no stingers	Live about 2 months in summer
Mother of all worker bees	Fly fast	Live about 6 months in winter
Lives 2-5 years	Live about 90 days	Do all the work in the hive, except making babies
Only job is to lay eggs	Only job is to mate with the queen	Collectors of pollen and nectar to make the honey



BUSY BEES

The workers, as the name implies, are always busy working inside the hive. Their jobs include everything from cleaning, to foraging, to taking care of young. When they are cleaning they are preparing cells for the queen to lay her eggs by removing cocoon material and coating them with propolis. They will also carry out any dead bees from the hive so the body doesn't spread any disease. After they graduate from cleaning, they move up to nurse bees and they will also help build cells to store honey and raise brood. As they continue to age they move into the job of guarding the colony and their last job they is to be a forager. As a forager they leave the hive in search of pollen and nectar to bring back to make honey.

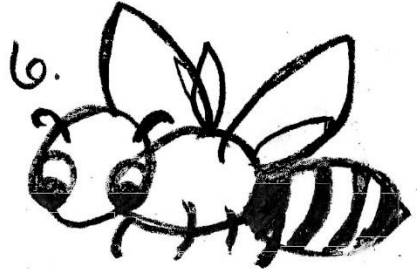
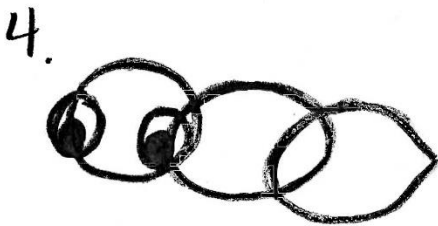
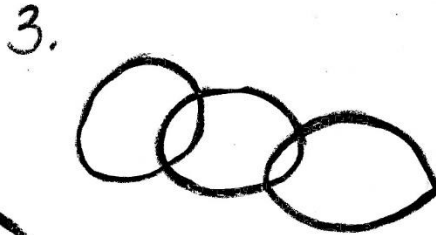
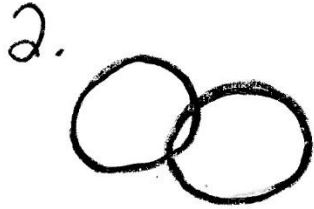
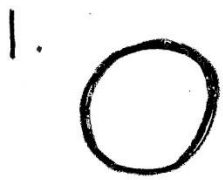
The queen does a lot within the brood nest. She is the one who helps to control the pheromones within the hive, the hive takes its cues from her. She is also the one who lays all the eggs for the colony, up to 2000 eggs per day. Without the queen the hive would die off. The queen is the largest bee in the colony and will also most likely be the oldest, as she can live 2-5 years.

The drones are the only males in the colony and only purpose is to mate with queens. If they don't or can't do their job, they are kicked out by the colony. Once they do mate with a queen, during her mating flight, their job is complete, and they die. These bees also take longer to develop with 24 days from egg to adult and another 24 days until fully mature and able to mate. Drones have large eyes and do not have stingers.



Can you spot the different types of bees in the picture above?

How to draw a Honey Bee



Now you know the basics,
you can draw your honey bee
flying all over!

